



APC5 Polyclonal Antibody

Catalog No	YP-Ab-16660
Isotype	IgG
Reactivity	Human;Rat;Mouse;
Applications	WB;ELISA
Gene Name	ANAPC5
Protein Name	Anaphase-promoting complex subunit 5
Immunogen	The antiserum was produced against synthesized peptide derived from human ANAPC5. AA range:151-200
Specificity	APC5 Polyclonal Antibody detects endogenous levels of APC5 protein.
Formulation	Liquid in PBS containing 50% glycerol, 0.5% BSA and 0.02% sodium azide.
Source	Polyclonal, Rabbit,IgG
Purification	The antibody was affinity-purified from rabbit antiserum by affinity-chromatography using epitope-specific immunogen.
Dilution	Western Blot: 1/500 - 1/2000. ELISA: 1/5000. Not yet tested in other applications.
Concentration	1 mg/ml
Purity	≥90%
Storage Stability	-20°C/1 year
Synonyms	ANAPC5; APC5; Anaphase-promoting complex subunit 5; APC5; Cyclosome subunit 5
Observed Band	85kD
Cell Pathway	Nucleus . Cytoplasm, cytoskeleton, spindle .
Tissue Specificity	Brain,Cerebellum,Cervix,Epithelium,Lung,Oesophagus,Periodontal liga
Function	function:Component of the anaphase promoting complex/cyclosome (APC/C), a cell cycle-regulated ubiquitin ligase that controls progression through mitosis and the G1 phase of the cell cycle.,pathway:Protein modification; protein ubiquitination.,similarity:Belongs to the APC5 family.,similarity:Contains 4 TPR repeats.,subunit:The APC/C is composed of at least 11 subunits.,
Background	This gene encodes a tetratricopeptide repeat-containing component of the anaphase promoting complex/cyclosome (APC/C), a large E3 ubiquitin ligase that controls cell cycle progression by targeting a number of cell cycle regulators such as B-type cyclins for 26S proteasome-mediated degradation through ubiquitination. The encoded protein is required for the proper ubiquitination function of APC/C and for the interaction of APC/C with transcription coactivators. It also interacts with polyA binding protein and represses internal ribosome entry site-mediated translation. Multiple transcript variants encoding different isoforms have been found for this gene. These differences cause translation initiation at a



downstream AUG and result in a shorter protein (isoform b), compared to isoform a. [provided by RefSeq, Nov 2008],

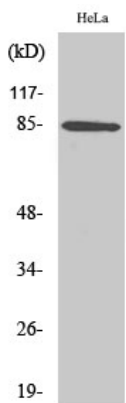
matters needing attention

Avoid repeated freezing and thawing!

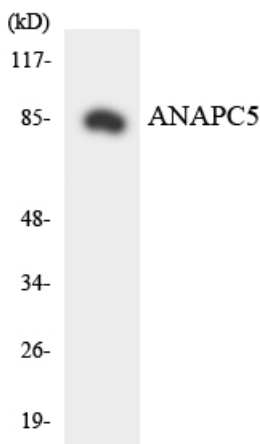
Usage suggestions

This product can be used in immunological reaction related experiments. For more information, please consult technical personnel.

Products Images



Western Blot analysis of various cells using APC5 Polyclonal Antibody



Western blot analysis of the lysates from HeLa cells using ANAPC5 antibody.